

A close-up photograph of a bunch of green grapes hanging from a vine, with some leaves visible in the background.

## SUSSEX™ INSECT GROWTH REGULATOR

### Formulation: 70DF

Mealybugs and other key pests including leafhoppers, planthoppers, and scales don't stand a chance with Sussex™ Insect Growth Regulator. Why? Equivalent to Applaud®, Sussex™ inhibits chitin biosynthesis, suppresses oviposition of adults, and reduces the viability of eggs and is a perfect fit for resistance management spray programs. Trials and constant observation of the effectiveness of Sussex over a number of years in testing and in commercial use, has shown proven performance, flexible and reliable insect control, long residual protection and the product does not flare mites.

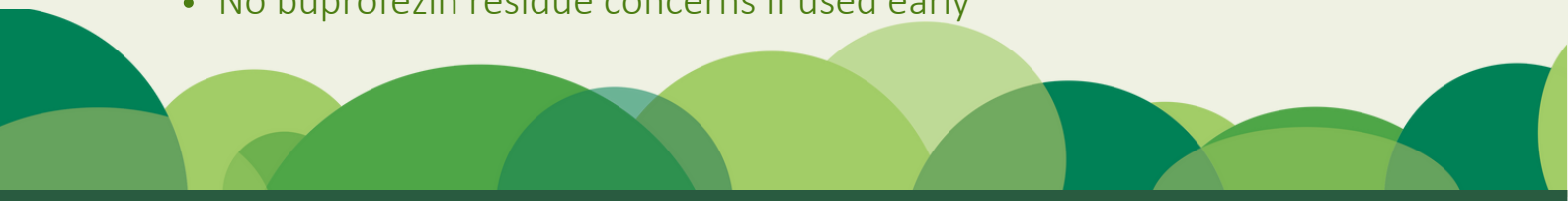
Sussex™ is effective against the nymphal stages of whiteflies, scales, mealybugs, and leafhoppers; Sussex is not an adulticide.

**Key crops:** coffee, grape, olive, Persimmon, pomegranate and tropical fruits.

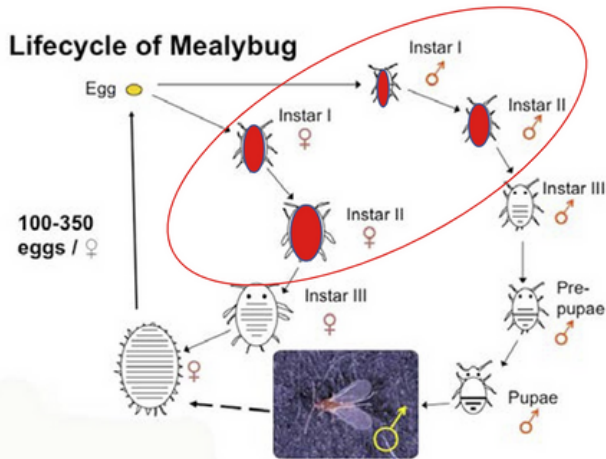
Vine Mealybug on grapes



## Features

- Applied at budbreak or post-harvest effectively treats Leafhoppers, Lecanium Scale and mealybug
  - Early timing application reduces overwintering populations to more manageable in-season levels
  - No concern of phytotoxicity with Sussex
  - No buprofezin residue concerns if used early
- 
- A decorative graphic at the bottom of the page consisting of several overlapping circles in various shades of green.

# Vine Mealybug Seasonal Development



- Overwinters in all developmental stages
- Development threshold temperature is 65F degrees
- 6-7 generations per year
  - 1st hatch (Bud break, early-March)
  - 2nd hatch (mid April)
  - 3rd hatch (mid-May)
- 4-7th generations, hatches overlap and move to basal leaves, canes, and clusters
- Mealybug applications typically do not start until Mid-April (2nd crawler hatch)

## The Sussex™ Strategy:

Start your mealybug control program at “bud-break” to maximize effective budbreak application timing:

- Mealybugs overwinter at susceptible stages
- Crawlers are very susceptible to Sussex
- Mealybugs are exposed as they move to the buds to feed
- Treat the trunk, cordon, spurs/canes, clusters
- Sussex offers long residual activity
- Contact, residual, fuming action



## Integrated Pest Management (IPM) Compatible

- Unique Mode of Action
- Excellent rotational partner
- No cross resistance with other IGRs
- Safe on honeybees when used according to label recommendations
- Soft on most natural enemies: lacewings, lady beetles, parasitoids, predatory mites and predatory thrips



To learn more about Sussex™ and our entire portfolio of specialized solutions, talk to your Sipcam Agro representative or visit [www.sipcam.com](http://www.sipcam.com). Always read and follow label directions.

**Sipcam Agro USA, Inc.**  
2525 Meridian Parkway, Suite 100 | Durham, NC 27713 | [sipcam.com](http://sipcam.com) | 800.295.0733

©2024 Sipcam Agro USA, Inc. Applause® is a registered trademark of Nichino America Inc.

